

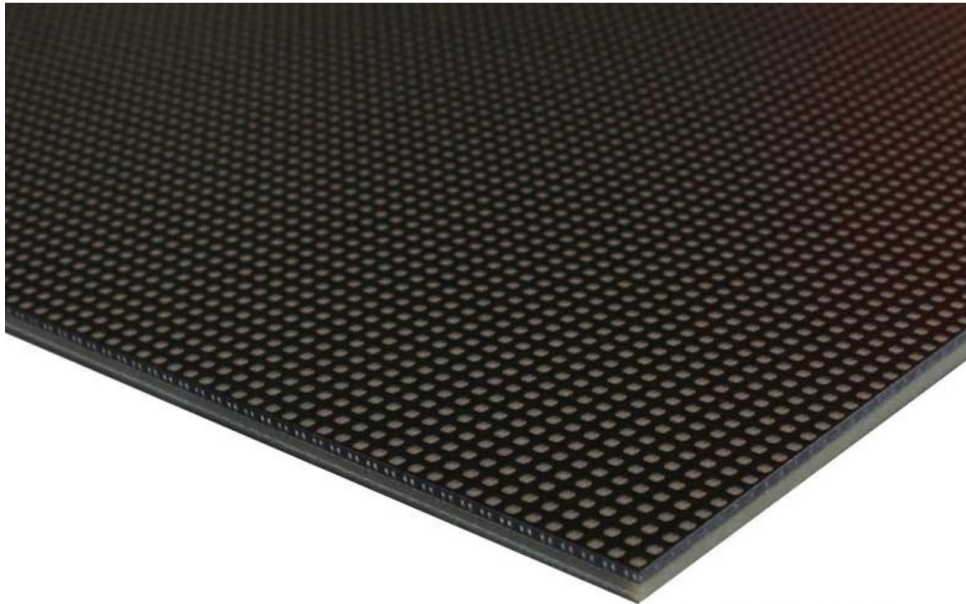
VISUALPOWER INDOOR COB FINE PITCH LED DISPLAY

1. INTRODUCTION

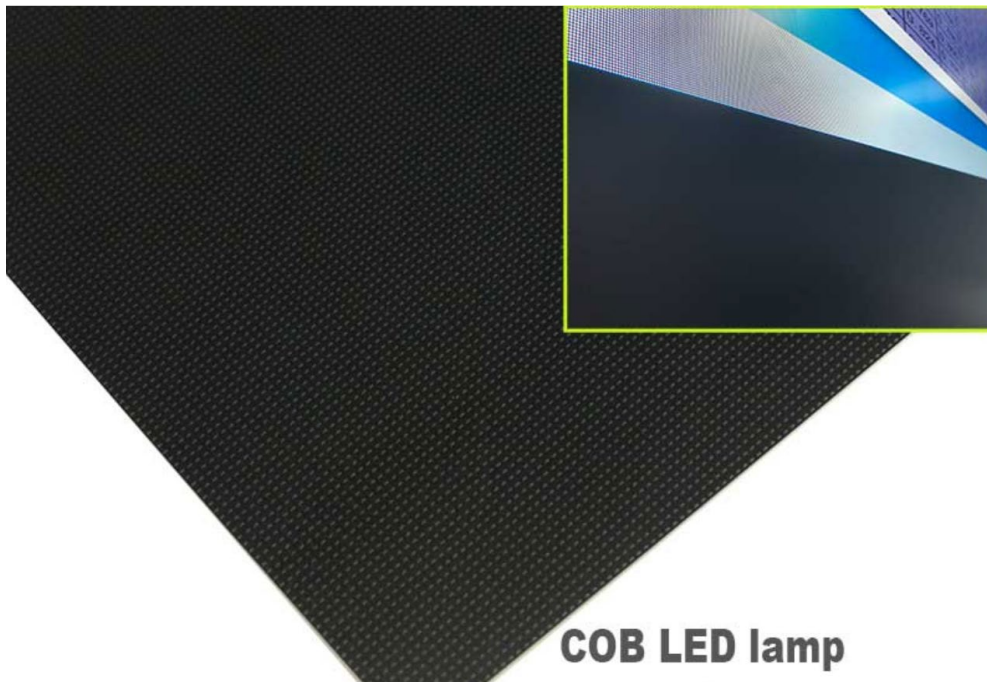
COB means “chip on board” which integrates the led chip on the PCB directly.

Compared to common SMD or GOB products, it is more reliable, more uniform color, higher protection level and contrast ratio.

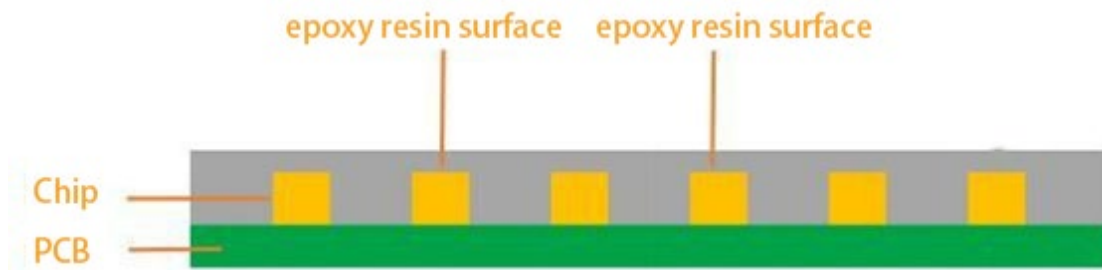
COB, SMD, GOB COMPARISION



GOB LED lamp



COB LED lamp



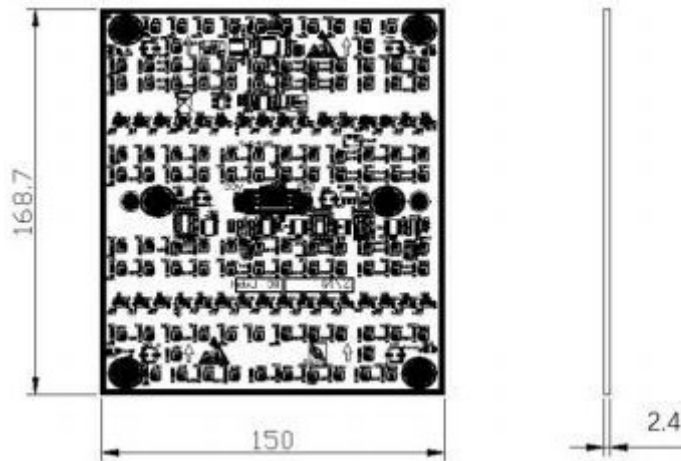
COB module surface structure

2. FEATURES

- 2.1. By uniform W600*H337.5*39mm, 16:9 display ratio cabinet design, compatible with multiple pixel pitch of P0.9375, P1.25, P1.56 and P1.875.
- 2.2. FLIP common cathode design, energy saving
- 2.3. High refresh rate 3840HZ, high gray scale over 14bit
- 2.4. Low heat generation, low brightness recession, longer life span
- 2.5. Dust-proof, water-proof, oxidation proof, static proof and collision proof
- 2.6. Module, power supply, receiver totally front serviceable
- 2.7. Support both front and back installation.

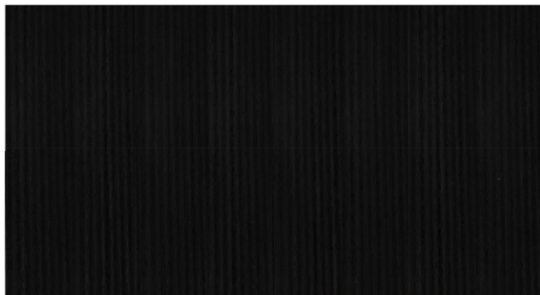
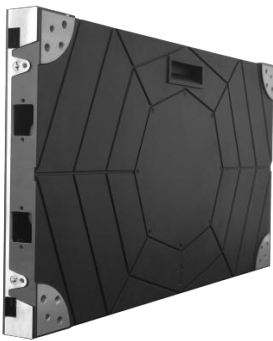
3. LED MODULE DESIGN

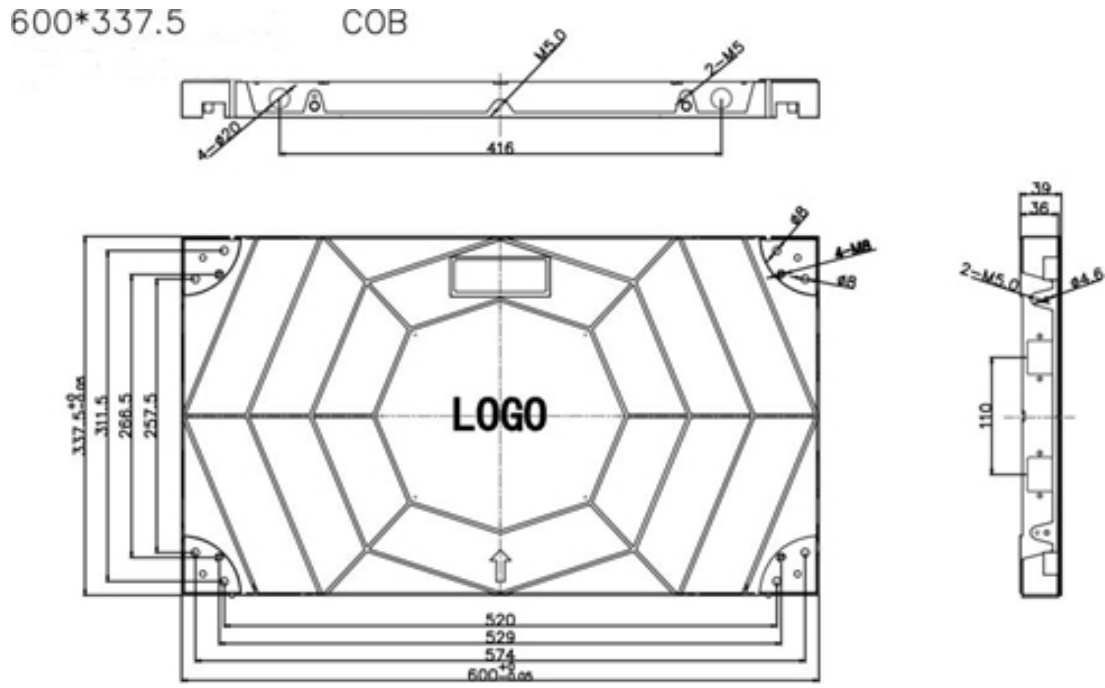




Uniform size of W150*H168.75mm, Net weight:150g Ultra slim design, with magnet front service.

4. CABINET DESIGN





Total cabinet depth with module 39mm. Net weight 6.5KGS

5. PACKING



PLYWOOD CASE



CARTONS



FLIGHT CASE

6. SPECS DATA

Specs		P0.9375	P1.25	P1.56	P1.875
Module specs	pixel pitch	0.9375mm	1.25mm	1.56mm	1.875mm
	pixel configuration	common cathode flip COB LED	common cathode flip COB LED	common cathode flip COB LED	common cathode flip COB LED
	pixel density (pixels/m ²)	1137778	640000	409600	284444
	Module size (mm)	150X168.75	150X168.75	150X168.75	150X168.75
	Resolution (W×H)	160x180	120x135	96x108	80x90
Cabinet specs	Module Qty (W×H)	4x2	4x2	4x2	4x2
	cabinet size (mm)	600(W)X337.5 (H) x39(D)	600(W)X337.5 (H) x39(D)	600(W)X337.5 (H) x39(D)	600(W)X337.5 (H) x39(D)
	Resolution (W×H)	640X360	480X270	384X216	320X180
	cabinet Area (m ²)	0.2025	0.2025	0.2025	0.2025
	cabinet weight (kg)	6.5	6.5	6.5	6.5
	cabinet material	aluminum die casting	aluminum die casting	aluminum die casting	aluminum die casting
	flatness (mm)	≤0.01	≤0.01	≤0.01	≤0.01
Optical specs	scan number	60	45	48	30
	brightness (nits)	≥650 (6500K) adjustable	≥650 (6500K) adjustable	≥650 (6500K) adjustable	≥650 (6500K) adjustable
	color temperature (K)	3200—9300 adjustable	3200—9300 adjustable	3200—9300 adjustable	3200—9300 adjustable
	Viewing angle (horizontal/vertical°)	160/160	160/160	160/160	160/160
	center offset	<3%	<3%	<3%	<3%
	brightness/color uniformity	≥97%	≥97%	≥97%	≥97%
	contrast ratio	10000:1	10000:1	10000:1	10000:1
	brightness calibration	Yes	Yes	Yes	Yes
	color calibration	Yes	Yes	Yes	Yes
electric specs	Max.power (W/m ²)	450	450	450	450
	Ave.power (W/m ²)	150	150	150	150
	Input voltage	AC90~264V, 47-63 (Hz)	AC90~264V, 47-63 (Hz)	AC90~264V, 47-63 (Hz)	AC90~264V, 47-63 (Hz)
Processing specs	frame frequency (Hz)	50&60	50&60	50&60	50&60
	scan number	60	45	48	30
	gray scale	65536	65536	65536	65536
	refresh rate (Hz)	≥3840	≥3840	≥3840	≥3840
	color depth	16bit	16bit	16bit	16bit

	Video play	2KHD, 4KHD	2KHD, 4KHD	2KHD, 4KHD	2KHD, 4KHD
Usage	working temperature/humidity (°C/RH)	-20 – 60 / 10%-85%RH	-20 – 60 / 10%-85%RH	-20 – 60 / 10%-85%RH	- 20 – 60 / 10%-85%RH
	storage temperature/humidity (°C/RH)	-20 – 60 / 10%-85%RH	-20 – 60 / 10%-85%RH	-20 – 60 / 10%-85%RH	- 20 – 60 / 10%-85%RH
	Safety standards	CCC, TUV-CE,	CCC, TUV-CE,	CCC, TUV-CE,	CCC, TUV-CE,