

Eiffel series die casting cabinet event rental led display



480*480mm uniform cabinet design, Compatible model: indoor P1.667, P1.875(ready model), P2.0, P2.5(ready model), P3.0.



500*500mm for P3.91 P4.81, P5.9 outdoor and P2.604, P2.976 P3.91 indoor

Features:

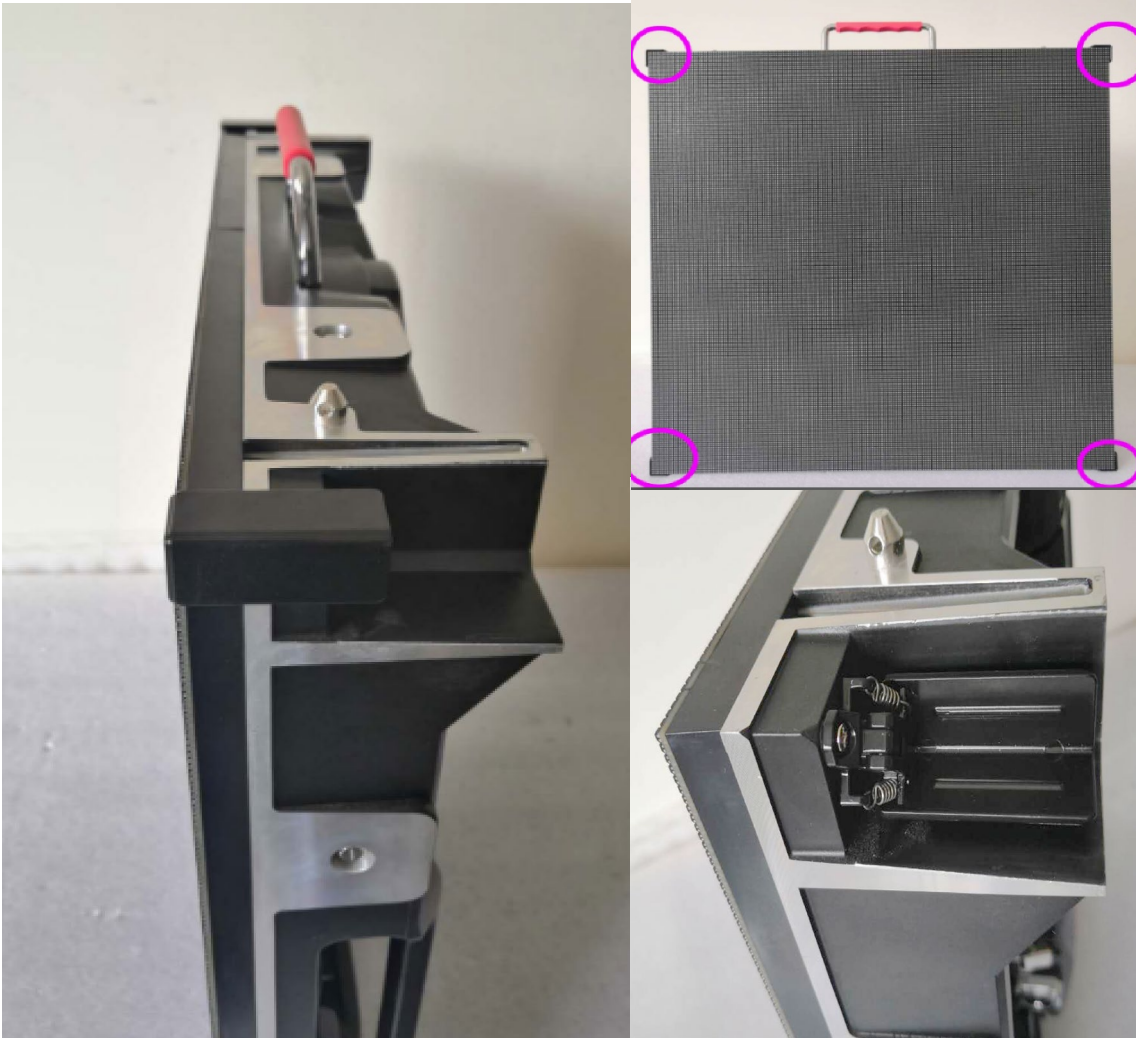
1. Precise private mold of aluminum die casting design
2. Uniform cabinet for different pixel pitch, easy to update to finer pitch in the future
3. With edge protection and anti-collision solder point
4. Module magnet front service, easy to suck out by specially made tool
5. Use ICN2153, 16 bit high refresh rate driver IC, good grayscale and color uniformity
6. By Kinglight SMD2121 or SMD1010 LED lamp, higher contrast ratio.
7. 240*240mm(for 480*480mm) or 250*250mm(for 500*500mm) uniform module size, big module size can be seamless assemble, no dark lines, and easy to suck out by the vacuum tool.



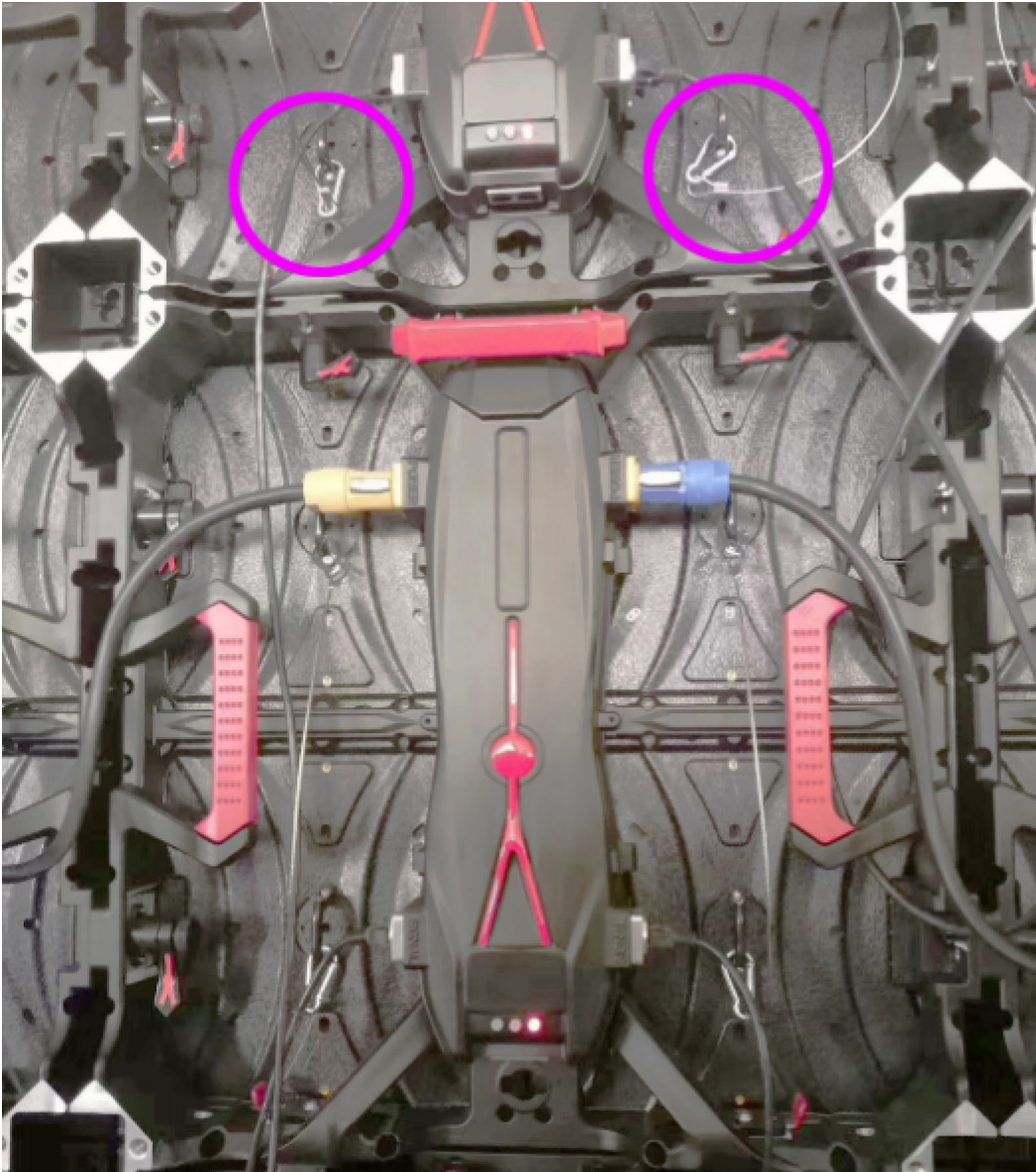
Module back with handle for front service



Modules by magnet, support both front and rear maintenance.



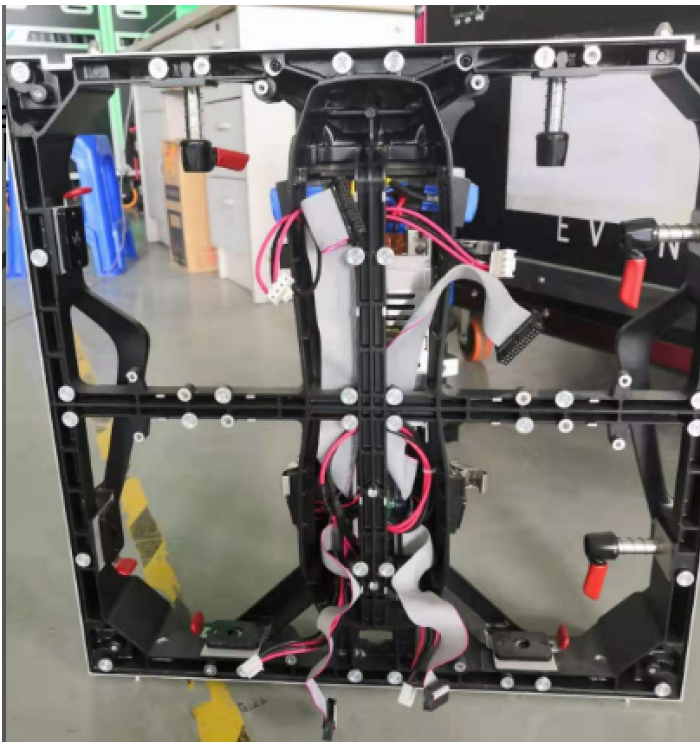
Can add safety steel wire to avoid modules falling off

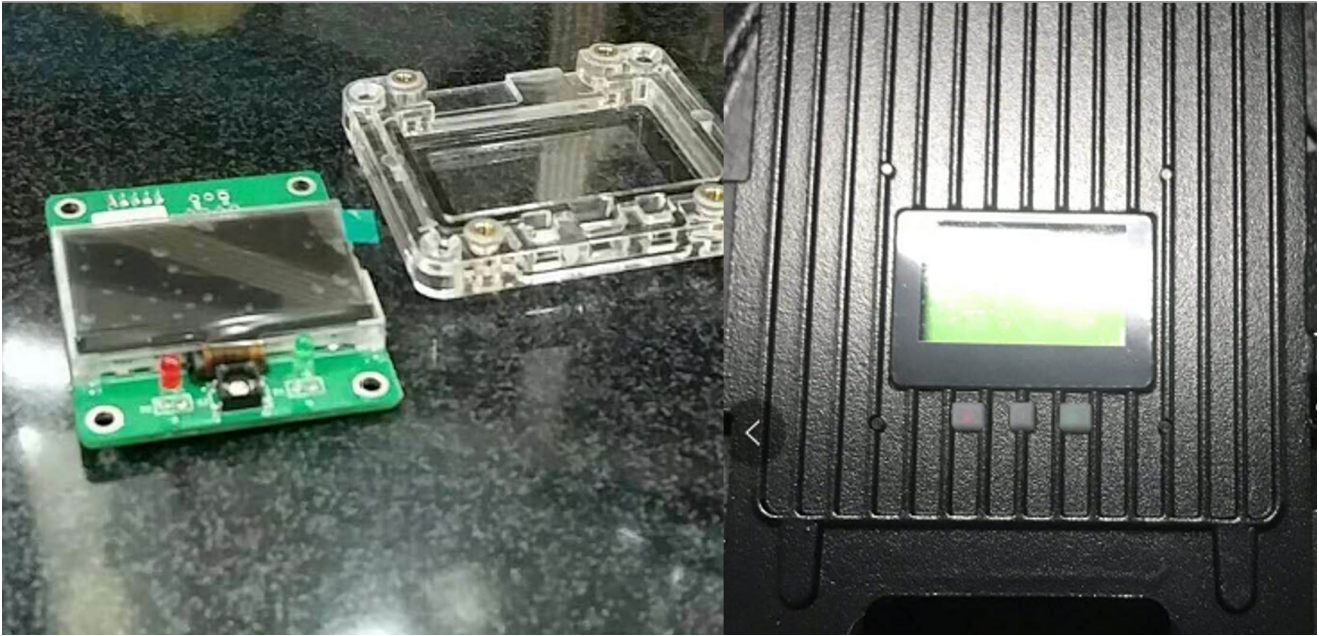


Integrated power and receiving card box design, easy to detach from the front side (remarks: the connection to the modules can be flexible flat cable or hard connection according to different models)



The power/receiving card box integrated design, it has four buckles. Remove the module first and detach the buckles, the whole rear box can be taken out from the front side.





Digital display showing running time, temperature optional

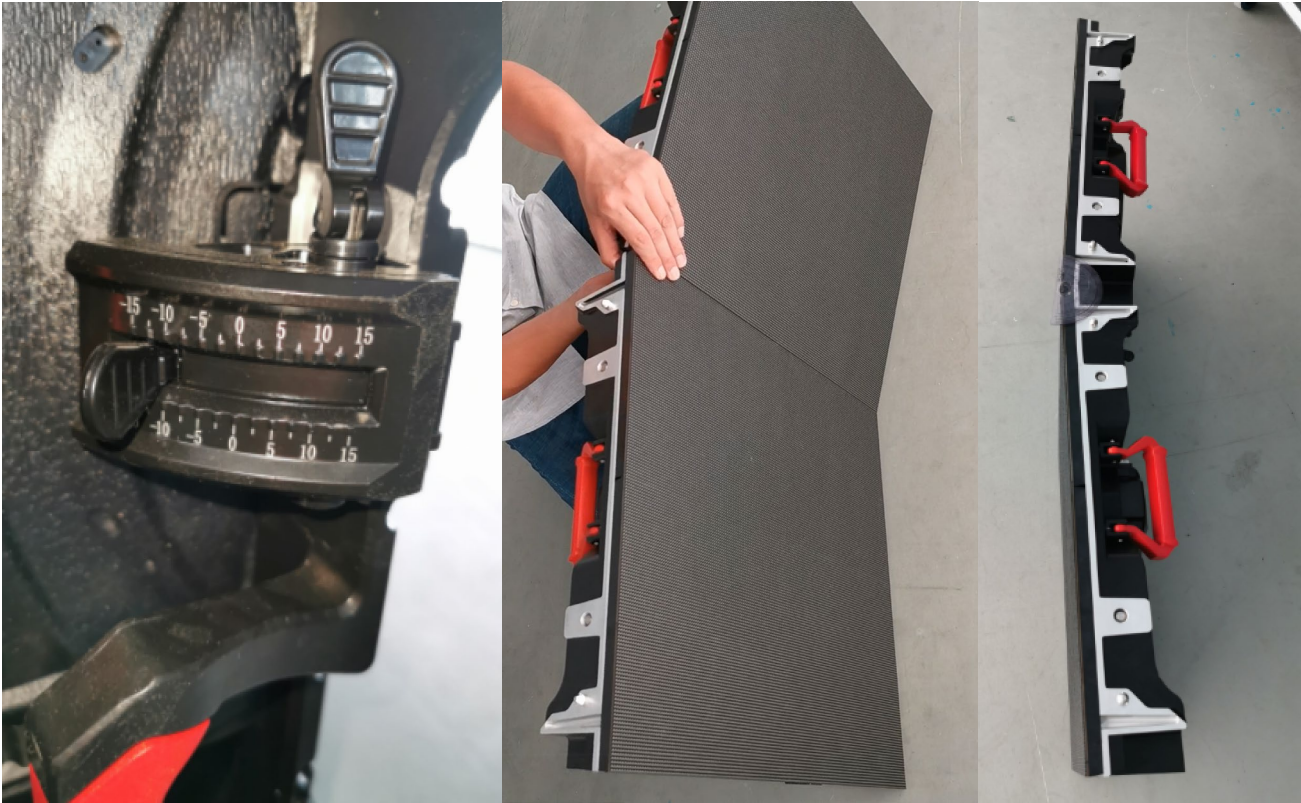


High refresh rate up to 3840HZ no scanning lines

With floor stand for cabinet protection



Convex and concave shape supported, convex max. 10 degree, Concave Max. 15 degree





Packing: one for 10pcs cabinets

