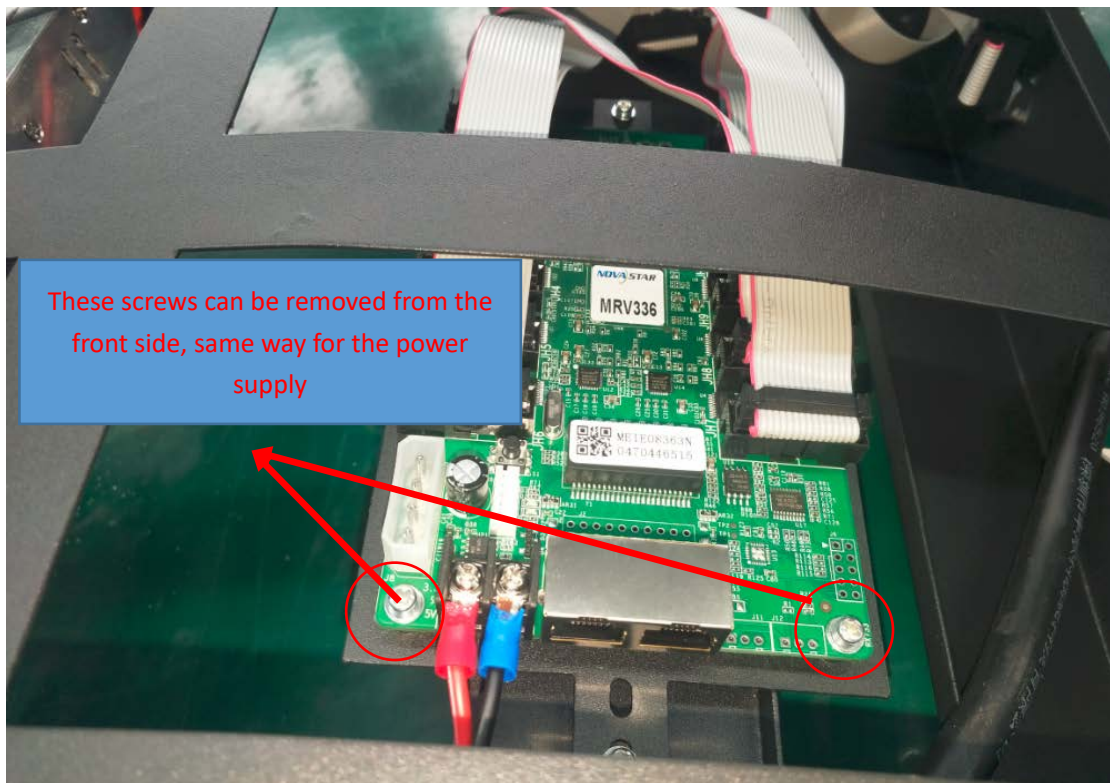
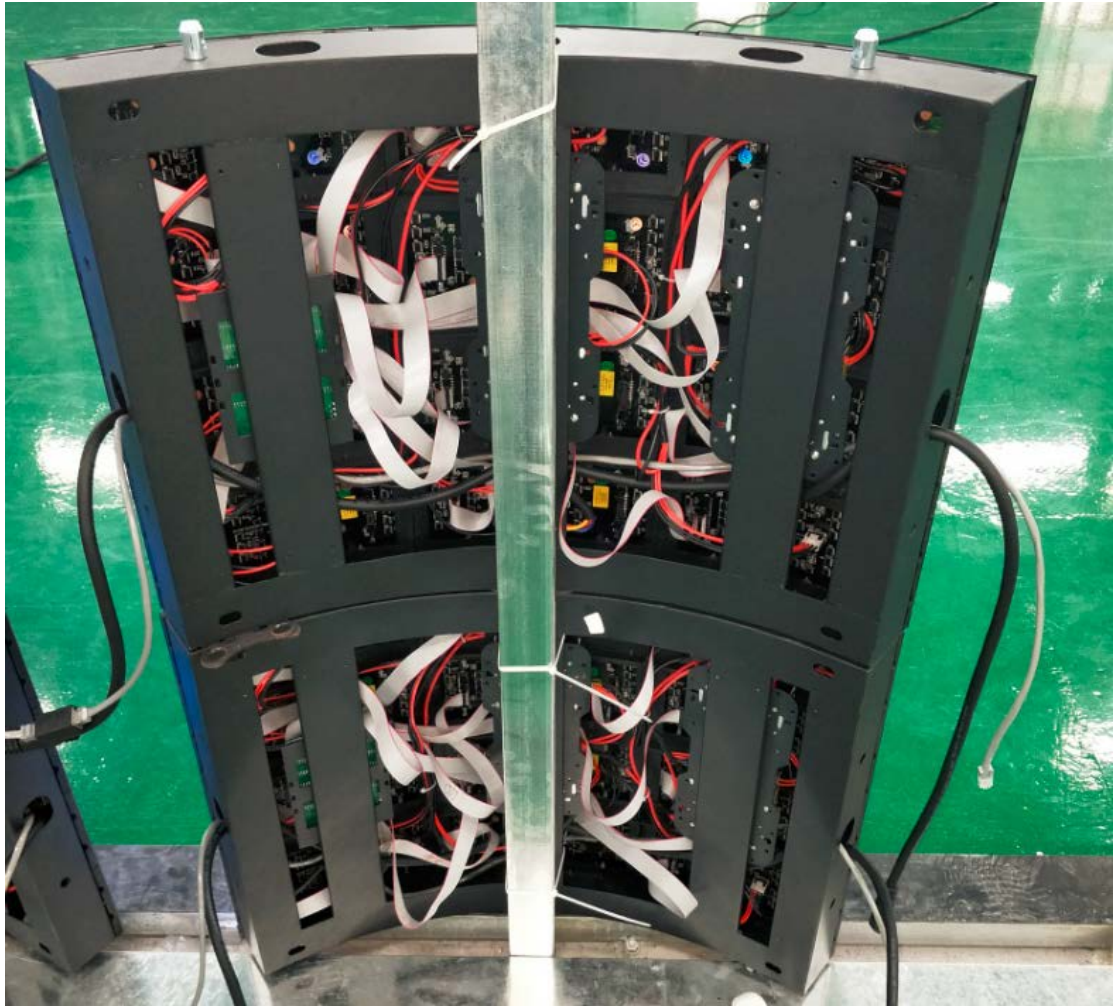


Above is the cabinet photo





Power cables and CAT5 cables are connected through the side holes of the cabinets. By male and female connectors.



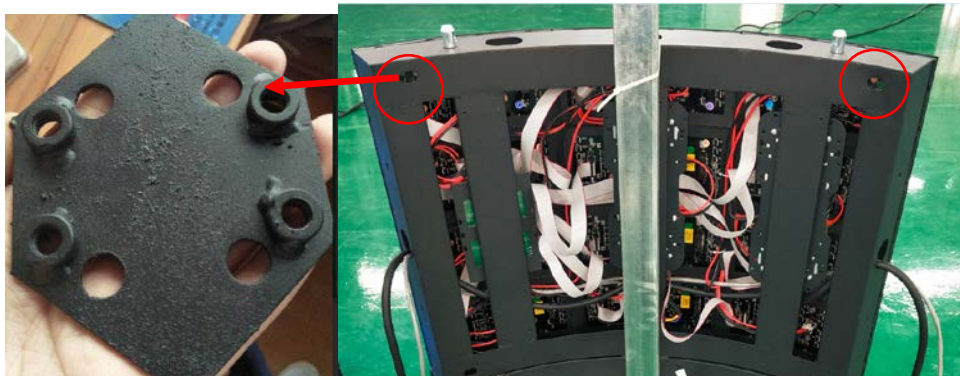
Male and female connector for power and CAT5 cable

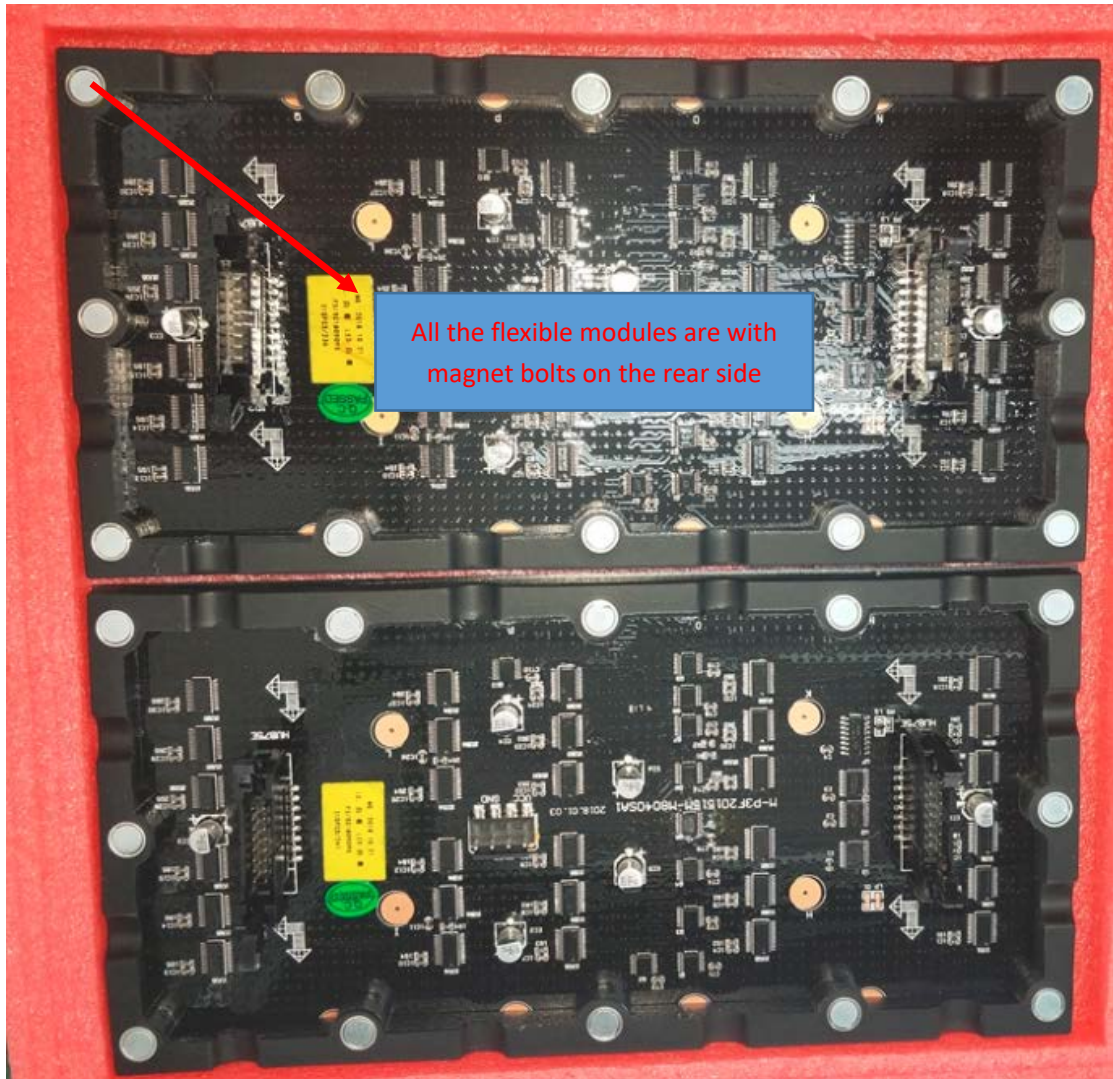


Between the cabinets are connected by bolts through this hole on the side of the cabinet. You need to remove the modules first and then do this job.

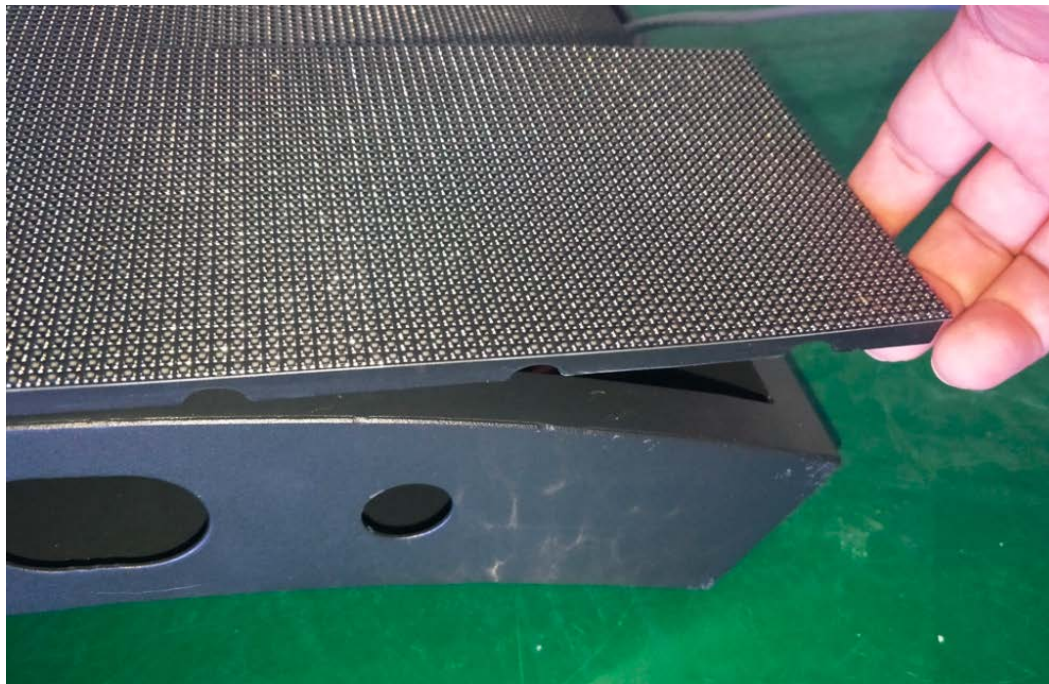


On the back side of the cabinets, it has a connection plate, which is also fixed from the front side and to the back side installation frame, to do this, you need to remove the modules at the corner first.





All the flexible modules are with magnet bolts on the rear side



Modules can be removed from the front side.